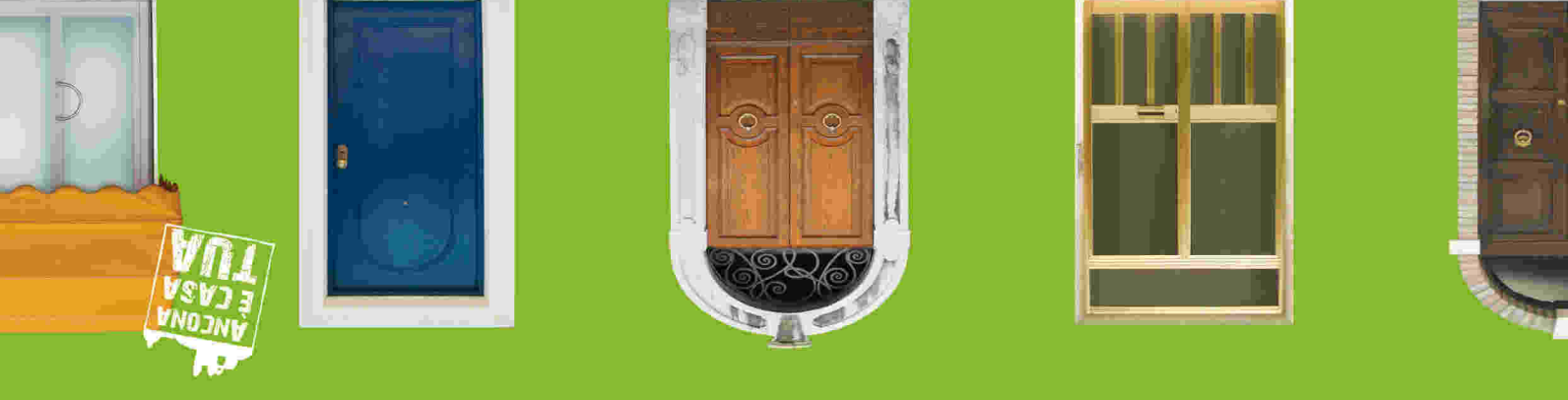


Parte il Porta a Porta

GAMBIA LA RACCOLTA DIFFERENZIATA DEI RIFIUTI



Making Ancona a clean city: we require everyone's effort.

Every beautiful city is first and foremost a clean city. Making a city clean requires commitment from those who live and work in it. In this leaflet you will find the fundamental rules for adding your own personal contribution to achieving and strengthening this important goal. Remember to consult it regularly for information on where to dispose the most commonly used items and packaging materials. Thanks to the new door-to-door waste collection system ("Porta a Porta"), all the city's **street garbage containers** will be removed and appropriate containers **will be delivered personally to each user**

containers for separating waste at home.



- an aerated brown container and paper bags for the organic fraction.
- a white container for paper and cardboard.
- yellow bags for plastic.
- a green container for glass and tin cans.
- reference material.

containers for individual dwelling units or apartment blocks comprising up to 3 families.



- a brown container for the organic fraction.
- a white container for paper and cardboard (the same as the one used for separating waste at home).
- yellow bags for plastic.
- a green container for glass and tin cans (the same as the one used for separating waste at home).
- a grey garbage bin is used for unsorted waste.

containers for apartment blocks comprising more than 3 families (the size of the containers may vary).



- brown wheeled bins for the organic fraction.
- white wheeled bins for paper and cardboard.
- yellow wheeled bins for plastic (for large apartment blocks only).
- green wheeled bins for glass and tin cans.
- grey wheeled bins for the unsorted fraction.

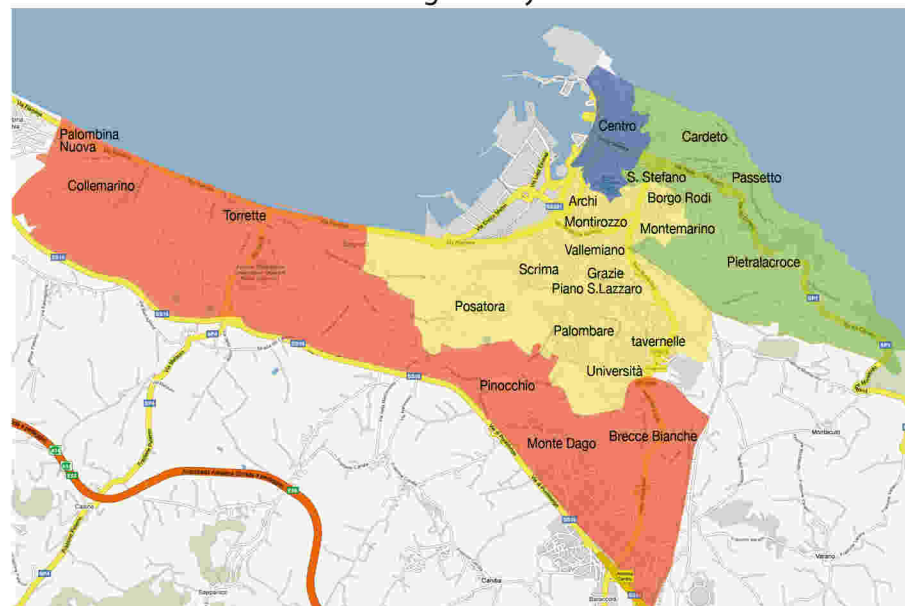
Please follow the procedures listed below in order to ensure that the new system functions correctly:

- **1** Sort waste correctly at home using the household containers and remember to consult the leaflet.
- **2** Once waste has been separated at home, place it into the appropriate apartment block containers, paying attention to the colours of the bins.
- **3** Place the containers on the street according to the day and time indicated on the collection calendar.
- **4** Place the containers in the areas indicated by AnconAmbiente, and only once they are full.
- **5** Collect the containers once they have been emptied by the appointed operators.



When

The "door-to-door" service will be gradually extended to the four zones in which the city of Ancona has been subdivided.



Zone 1 ➤ september 2008

Collemarino, Torrette, Pinocchio, Palombina Nuova, Monte Dago Brece Bianche e zona Università

Zone 2 ➤ november 2008

Posatora, Piano San Lazzaro, Borgo Rodi, Archi, Vallemiano, Grazie, Tavernelle, Palombare, Scrima, Palombella, Montemarino, Montirozzo

Zone 3 ➤ march 2009

Cardeto, Santo Stefano, Adriatico, Passetto, Pietralacroce

Zone 4 ➤ may 2009

City centre (from San Pietro to Capodimonte)

Rules and suggestions for correct waste separation

- Collection will take place once a week for all categories of waste, except for **organic waste** which will be collected twice a week during the winter months and three times a week in the summer months.
- Only use the appropriate paper bags supplied by AnconAmbiente for collecting **organic waste**. Separate waste at home using the appropriate containers. Place the correct personal or apartment block waste container on the street (you will be provided with a calendar indicating the collection days). Always reduce the waste bulk to a minimum by folding or crushing the various materials.
- Bottles and other containers must be emptied and rinsed before being thrown away.
- For any doubts on where to dispose of waste, please contact the toll-free number or visit the website www.anconambiente.it. When in doubt, the best solution is to use the grey container for unsorted waste in order to avoid making everyone's work useless. However, try to use as little as possible and only for material that cannot be separated.

ORGANIC FRACTION

Twice a week

(3 times a week during summer from 1st June to 30th September).



YES

Cold food leftovers, fruit and vegetable scraps, egg shells, meat and bones, fish and fishbones, crayfish and shellfish shells, bread and rice, tea and herbal tea filters, used coffee grinds, withered flowers and indoor plants, used paper napkins, paper towels.

NO

All non-organic material, leftovers of hot foodstuffs, liquids, lint rollers and band-aids, litter boxes for dogs and cats, paper fabrics and nappies.

PAPER AND CARDBOARD

Once a week



YES

Newspapers, books, exercise books and agendas, cardboard and cartons, folded cardboard boxes, photocopies, wrapping paper, Tetra Pak containers (e.g. cartons for milk, fruit juices, wine, etc.), paper containers for food (e.g. for sugar, pasta, salt, etc.).

NO

All non-cellulosic material, containers for hazardous products, oiled or plasticised paper, food wrapping paper (e.g. for cheese or sliced pork meats), oven paper, carbon and parchment paper, chemical paper (e.g. for fax machines and shop slips), paper with glue residues, sandpaper, dirty or wet paper, disposable plastic plates and cups.

PLASTIC

Once a week



YES

All packaging items and plastic containers, bottles (e.g. for mineral water, beverages, milk, juices, etc.), plastic food trays and jars, containers and bags for storing foodstuffs (e.g. pasta, crackers, etc), shopping bags and packets, bottles and dispensers (e.g. for detergents, soaps, shampoo, etc.), polystyrene packaging, plastic tubes, cellophane rolls and film.

NO

All non-plastic packaging material, hospital waste (e.g. syringes, body fluid containers), jars and packets for hazardous materials (e.g. glue, paint and solvents), toys, CD/DVD covers, audio and video cassettes, disposable plastic plates, cups and cutlery, clothes hangers, bowls, dirty plastic packaging material.

GLASS AND TIN CANS

Once a week



YES

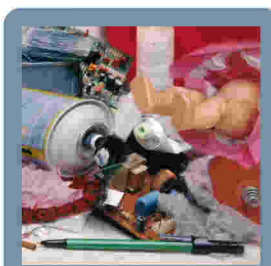
Glass bottles, glass vases and jars, clean aluminium glasses, cans and trays, metal jars, steel or aluminium cans (e.g. for tuna, preserves, beans, etc.), metal clothes hangers (dry-cleaners), empty spray cans, aluminium paper.

NO

Sheet glass, demijohns, mirrors and other bulky glass material, crystal, porcelain, ceramic, terracotta, light bulbs and neon bulbs, paint and solvent containers (labelled "T" and/or "F").

UNSORTED FRACTION

Once a week



YES

Broken toys, CD/DVD covers, CDs/DVDs, rubber items, synthetic sponges, nappies, sanitary pads or tampons, photographs and photographic film, litter boxes and animal excrements, plastic plates and cutlery, cigarette butts and ash, dust, waste from diverse materials (brushes, toothbrushes, razor blades), packaging material stained with food residues.

NO

All items that can be separated, liquid waste, dangerous or hazardous waste, bulky waste, WEEE ("Waste from Electrical and Electronic Equipment") waste.

BULKY WASTE AND WEEE ("Waste from Electrical and Electronic Equipment") waste

at CentrAmbiente



NEVER abandon bulky waste items on the street! Severe fines will be applied to transgressors.

Furniture, chairs and tables
Sofas and armchairs
Mattresses and bed bases
Household appliances (e.g. washing machines, refrigerators, dishwashers and vacuum cleaners)
Electronic equipment (e.g. TV sets, computers, fax machines, stereo sets, cellular phones)

Demijohns, glass sheets and mirrors
Sanitary ware and inert waste deriving from small demolition activities.
Doors and windows

free door-to-door collection upon calling the toll-free number (for household use only).

Numero Verde
800 680 800

PLANT TRIMMINGS



at CentrAmbiente
Collection upon reservation through toll-free number.

Numero Verde
800 680 800

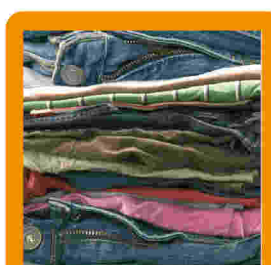
MEDICINES AND BATTERIES



at CentrAmbiente or in the appropriate containers.



USED CLOTHING



in the appropriate containers



OTHER TYPES OF WASTE

at CentrAmbiente

CentrAmbiente is an authorised area where inhabitants may also dump the following materials:



Toners and cartridges for photocopy machines, fax machines and printing machines
Mineral and vegetable oils – Used oils
Tires
Iron and wood
Fluorescent tubes (neon lamps or low-energy lamps)
Containers bearing the "T" label (toxic) and/or the "F" label (flammable)



Ancona, Via del Commercio 27 – Monday to Saturday from 8:30 am to 11:30 am and from 2 pm to 5:30 pm.