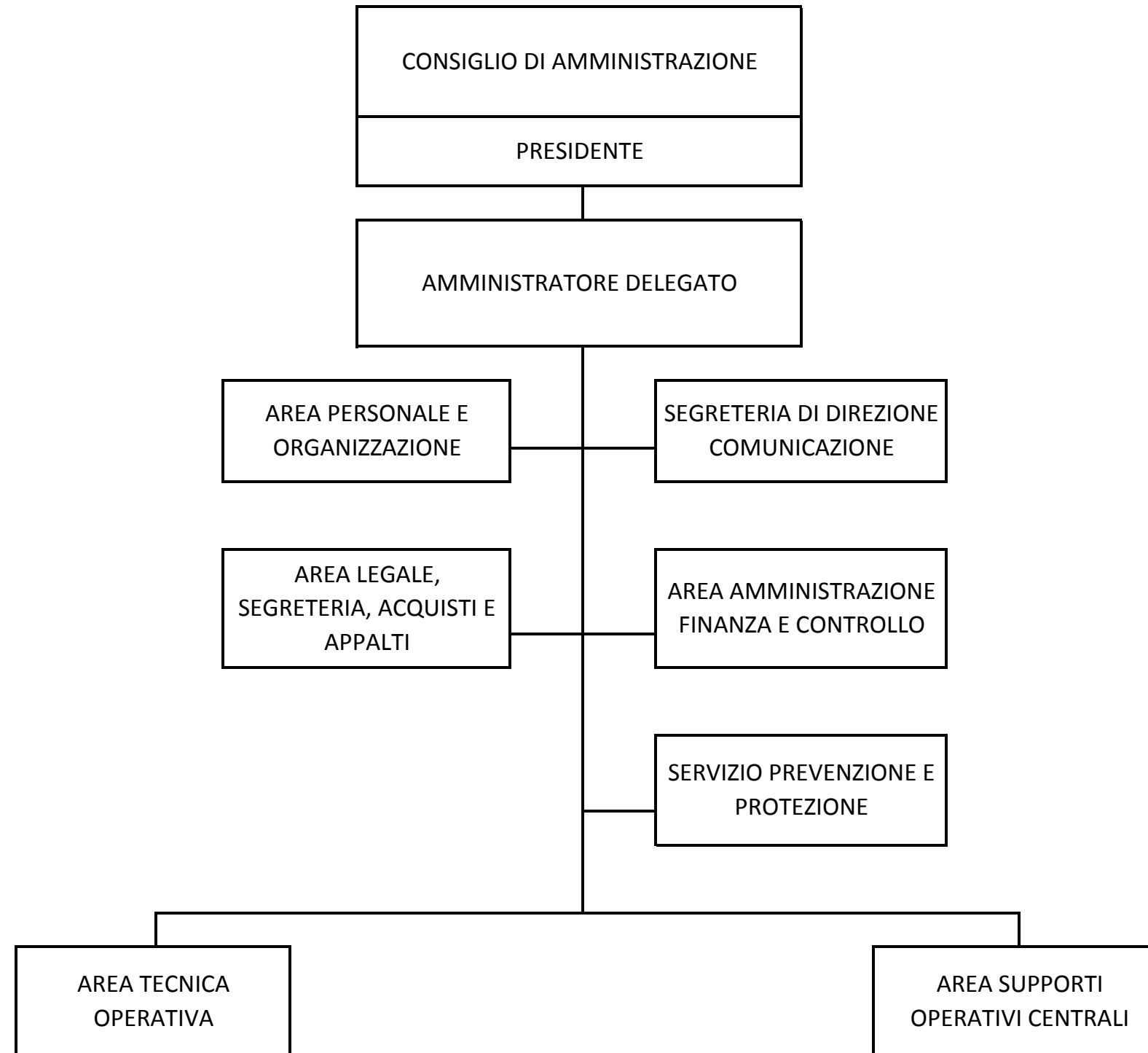
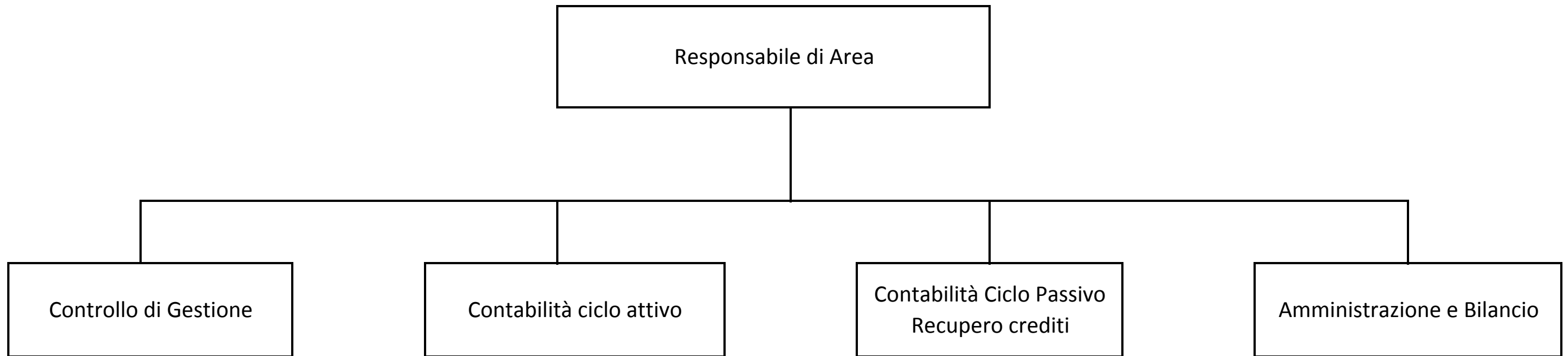


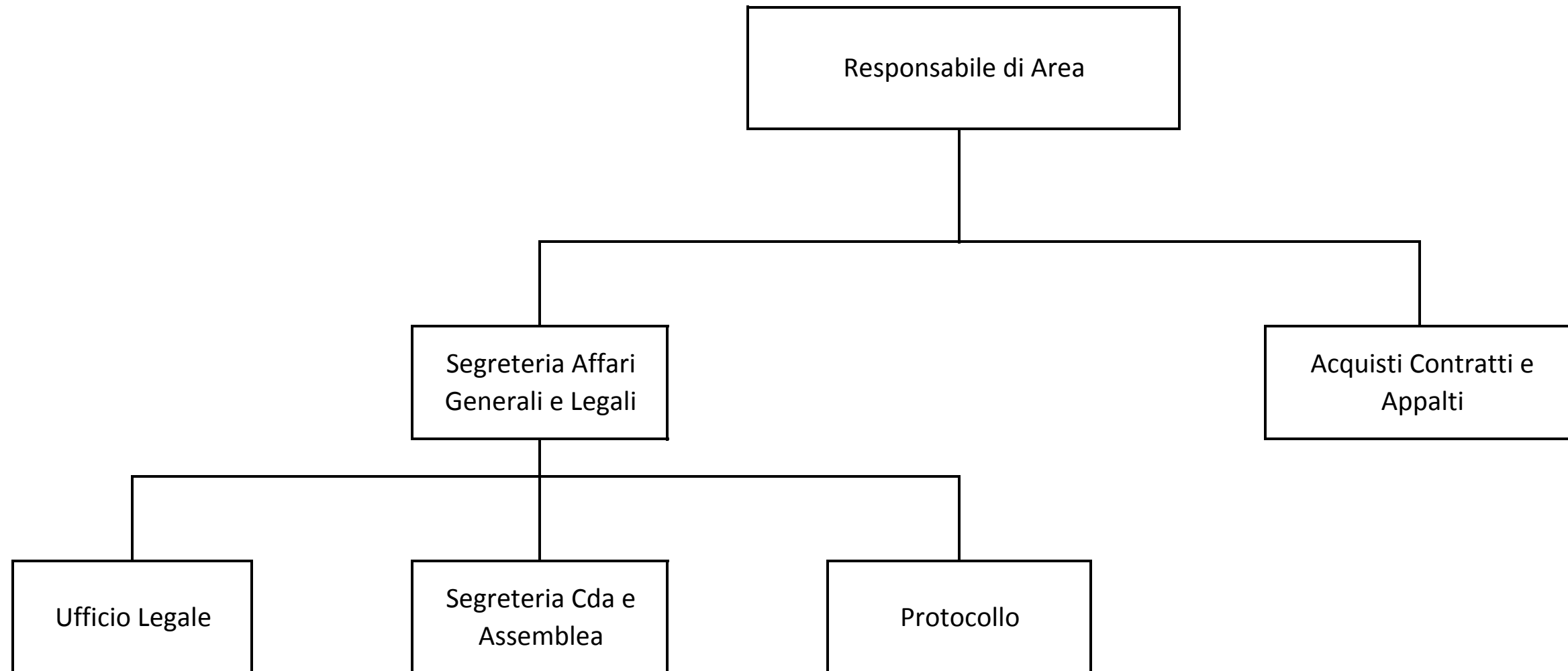
## ORGANIGRAMMA AZIENDALE



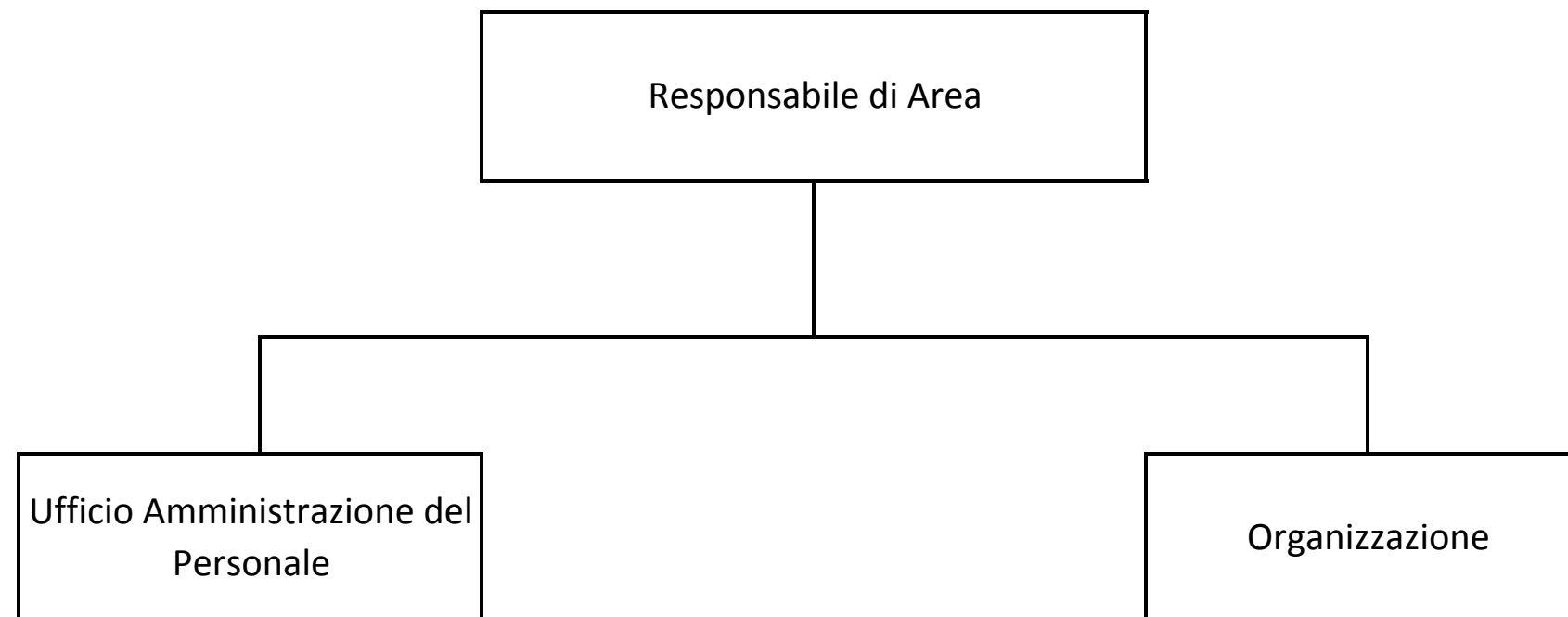
**AREA AMMINISTRAZIONE FINANZA E CONTROLLO**



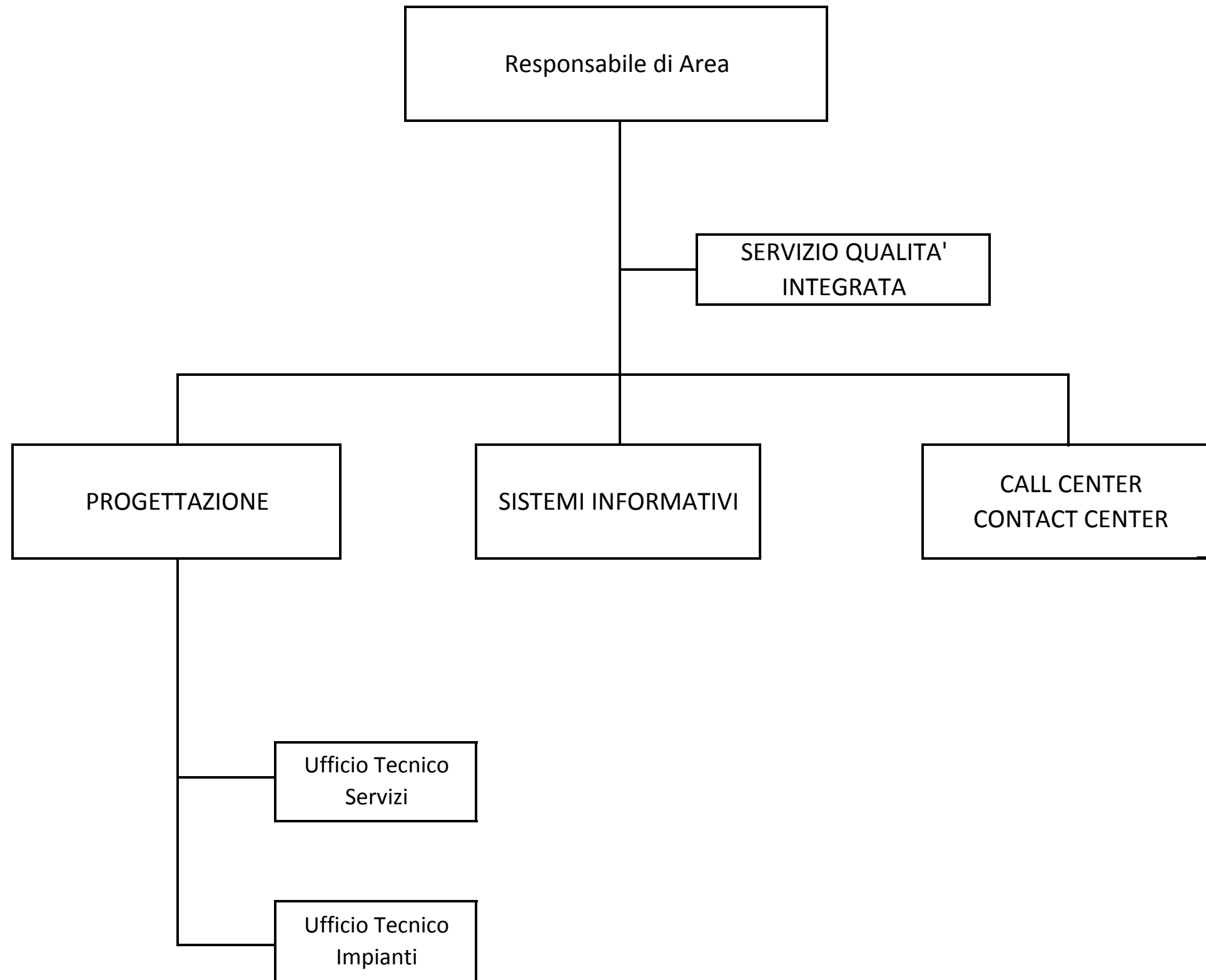
**AREA LEGALE, SEGRETERIA, ACQUISTI E APPALTI**



**AREA PERSONALE E ORGANIZZAZIONE**



## SpA AREA SUPPORTI OPERATIVI CENTRALI



**AREA TECNICA OPERATIVA**

